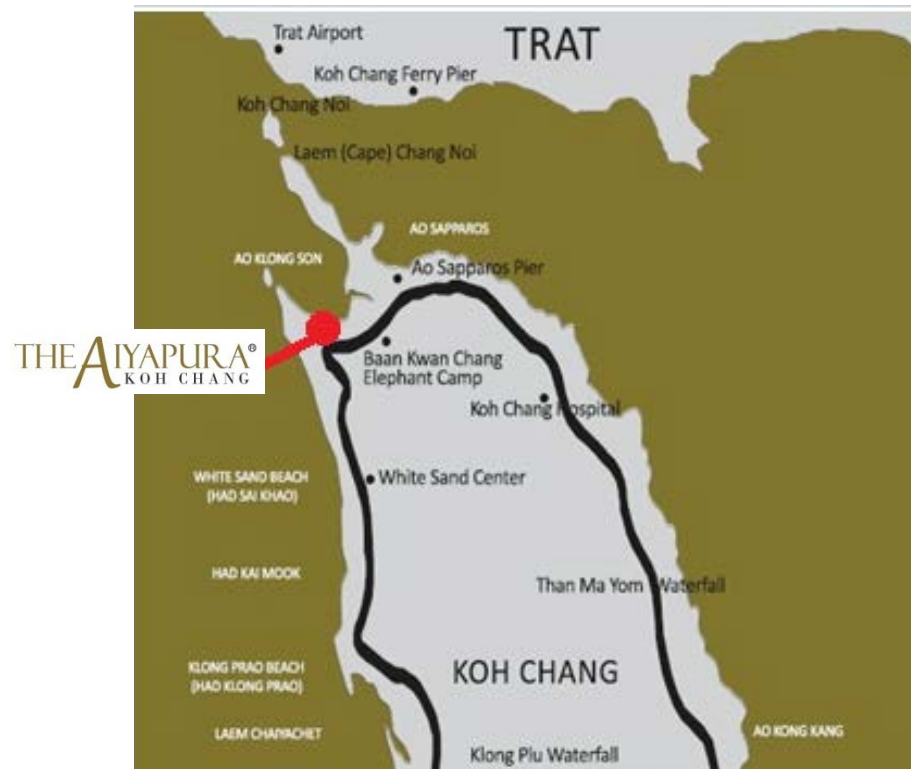


The Aiyapura Koh Chang

MAP



THE AIYAPURA® KOH CHANG

YOUR PRIVATE NATURAL PARADISE

www.aiyapura.com



THE AIYAPURA® KOH CHANG

The Aiyapura Koh Chang is beautifully situated in a private island called Koh Chang (Elephant Island or Island of Elephant) Along the coastline on the gulf of Thailand, Koh Chang is presented a bunch of a variety of natural characters; evergreen rainforest, untracked jungles, rising-to-the-sky mountains, breathtaking waterfalls, spectacular coastlines, fine white sand beaches, colorful lively corals, glittering clean blue sea, and the abundance of marine creatures.

Koh Chang is Thailand second largest island which always keeps the wonderful tropical jungle and crystal clear blue sea to attract new visitors. Koh Chang can be reached from Bangkok by direct flight in only 45 minutes or in 4 and half hours by cars.



ENVIRONMENTALLY

FRIENDLY

HOTEL

The Aiyapura Koh Chang is located in 40 acres in the northeast of the island. This peaceful retreat is fronted by narrow stretch of sand in Klong Son Bay and backed by heavily forested hillsides.

Regarding magnificent nature, The Aiyapura Koh Chang becomes one of the touchable tropical paradises for all visiting tourists. Aiyapura is easily accessible with only 5 minutes taking from Koh Chang ferry pier by the resort shuttle van.

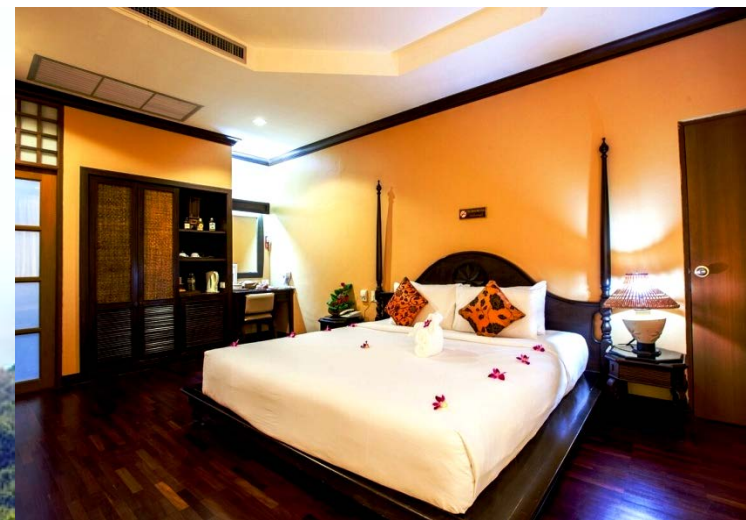
Beautiful Thai style villas and suites in the resort are surrounded by green tropical gardens faced to non-stop-waving oceanic scenery. Also, a large thirty-metered swimming pool in a leaf shape turns your vacation be more incredibly enjoyable.



DELUXE ROOM

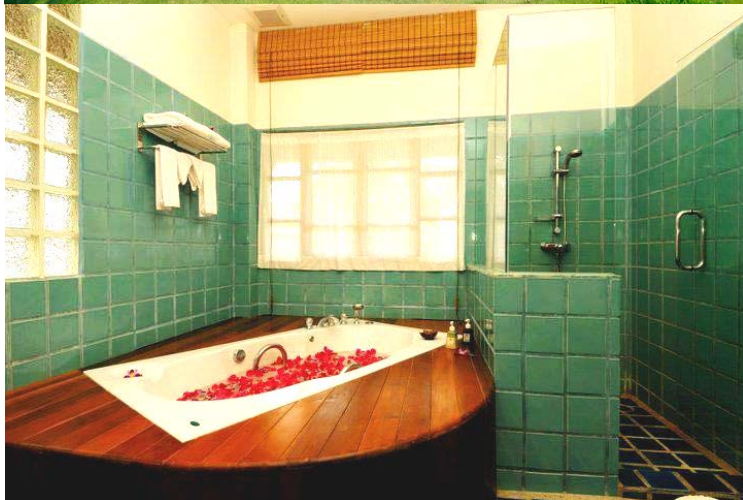
52 Deluxe Rooms (36 sqm.) were designed for ultimate comfort and space offering private balcony.





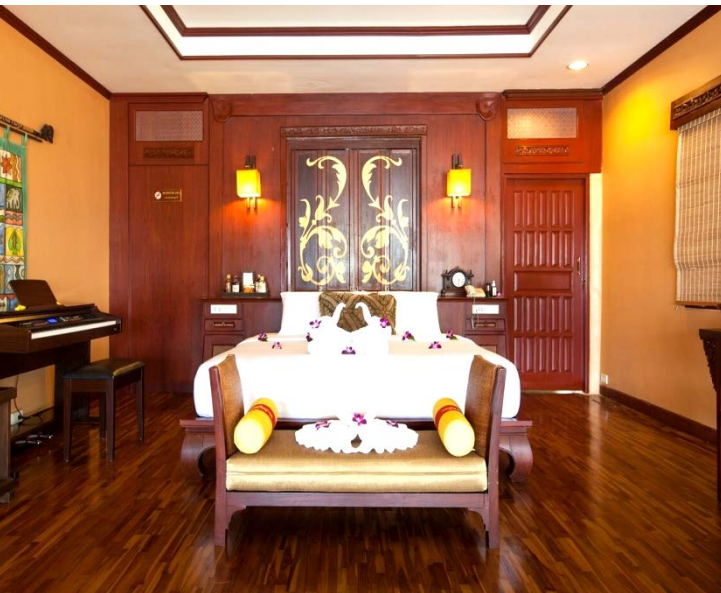
PREMIER ROOM

18 Premier Rooms (43 sqm.) offer unobstructed views of the ocean as well as cozy and spacious comfort with outdoor shower.



GARDEN VILLA

20 Garden Villas (56sqm.) offered total privacy in tranquil surroundings. All were designed to be concordant with the local environment.-



POOL VILLA

The style and décor for these 5 villas (105 sqm.) were inspired by ancient Thai Designs. They offer guests a choice of indoor and outdoor living, where you can relax or dine on your own private expansive pool deck, or plunge directly into your own private swimming pool.

AIYA MASSAGE

At Poolside



Offers secluded privacy to pamper the body and refresh the soul.

The experienced therapists use products made from natural extracts to suit all skin types. Traditional Thai massage, Aromatherapy, Reflexology, Body Scrubs and Wraps, Facial and other relaxing, rejuvenation therapies.

DINING AT THE AIYAPURA

Ruen Plub Plueng Restaurant

Tantalize your buds with authentic Thai cuisine and International Delicacies. All dishes are selected from four regions of Thailand and the World. The ambience is relaxed with spectacular sunrise and sunset view.



MEETING AT THE AIYAPURA

The exceptional function rooms, complete with modern audio visual equipment and impeccable service, accommodate up to 80 - 250 people.

*Aiyapura Hall

- Aujchara I (504sqm.)
- Aujchara II (80sqm.)
- Aujchara III (80sqm.)

*Aujchara IV (99sqm.)

*Vimarn Kaew (190sqm.)

*Business Centre & Board Room (75sqm.)



ACTIVITIES

- Playground
- Swimming Pool
- Fitness Center
- Library Center
- Trekking & Nature Walk/Jogging
- Water Sport Activities(kayak, canoe)
- Mountain Biking
- Trampoline



SALES OFFICE

58 Soi Krungthonburi 1, Klong Ton Sai, Klong Sarn, Bangkok,
10600

Tel: +66 2 862 1611 ext.700 Fax: +66 2 862 1050

Email: dos@aiyapura.com

RESERVATION: +66 39 555 111

RESORT ADDRESS

The Aiyapura Koh Chang 29 Moo 3 Chang Island District, Trad,
Thailand 23170

Tel: +66 39 555 111 Fax: +66 39 555 118

Email: fo@aiyapura.com, info@aiyapura.com

WEDDING AT THE AIYAPURA

Perfect Beach Wedding Rental Venue & Wedding Requirement
that matches your needs.

